



Solutions  
for human  
progress

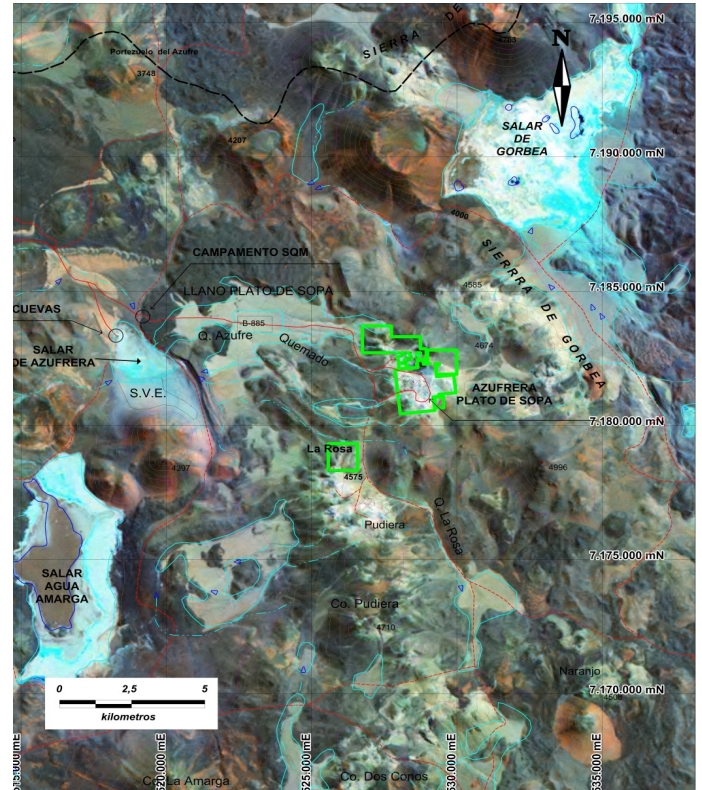
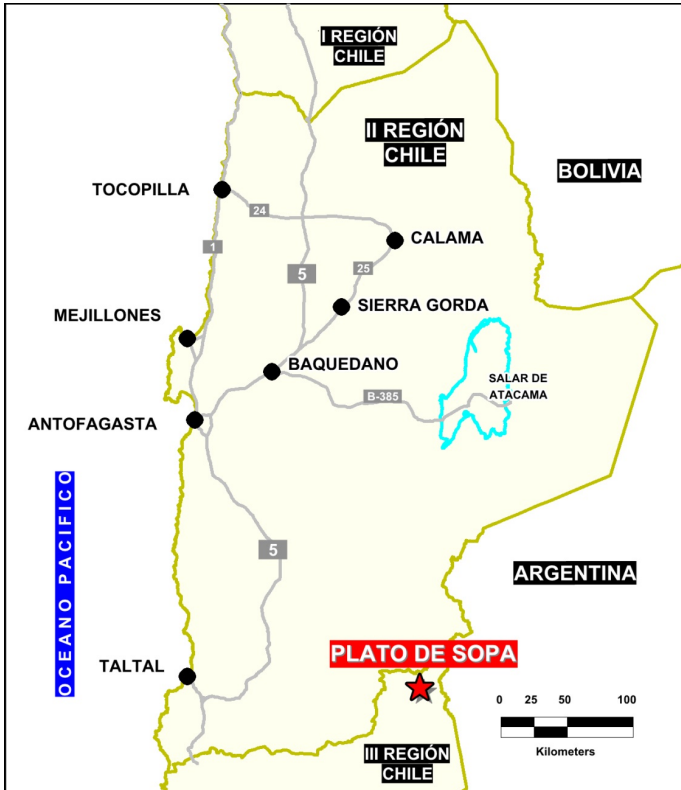
# Plato de Sopa

Basic Exploration

Prospect #96

## SUMMARY

Observed alteration patterns consistent with epithermal gold silver systems



## HIGHLIGHTS

Central Northing (UTM):	7181000
Central Easting (UTM):	528500
Elevation (masl):	4500
Metal(s):	Au, Ag, Cu
Deposit Style:	Epithermal
Exploration Stage	Basic Exploration
Area (hectares)	655
Nearest Project:	Titan
Historical:	district worked by Metallica

## EXPLORATION WORK

Geological Mapping:	1:25000
Geochemical Samples:	66
Trenching	N/A
Channel Samples	N/A
Geophysics:	N/A
RC Drill holes	N/A
DDH Drill holes:	N/A
Total drilling :	N/A
Other:	PIMA, 90% cover





Solutions  
for human  
progress

# Plato de Sopa

Basic Exploration

Prospect #96



## CONTACT DETAILS

**Jose Dias Cifuentes**  
New Metal Business Director  
jose.dias.cifuentes@sqm.com  
+56 9 7465 7359

**Ricardo Gonzalez Montecinos**  
Metal Business and Exploration Manager  
ricardo.gonzalez.montecinos@sqm.com  
+56 9 6320 7257

[www.sqm.com](http://www.sqm.com)

