

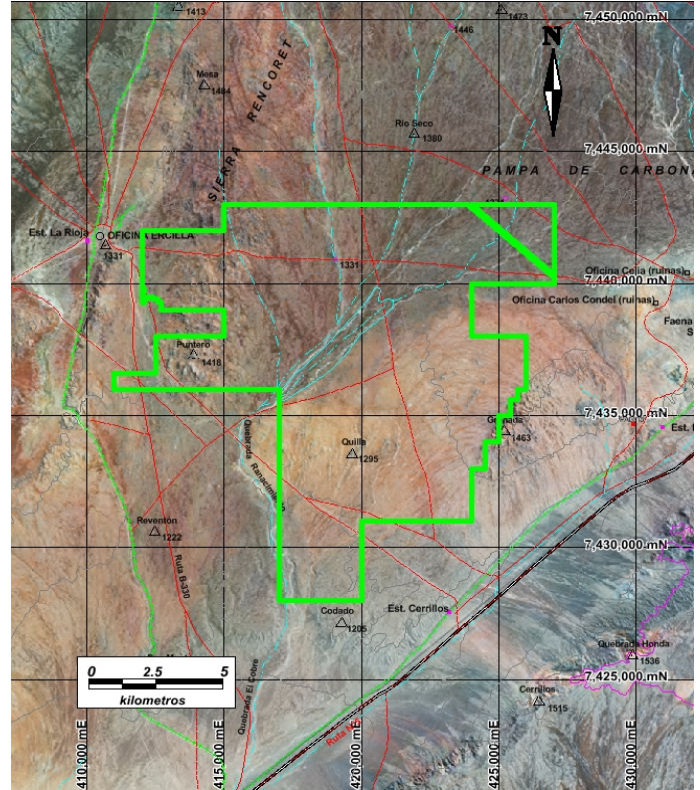
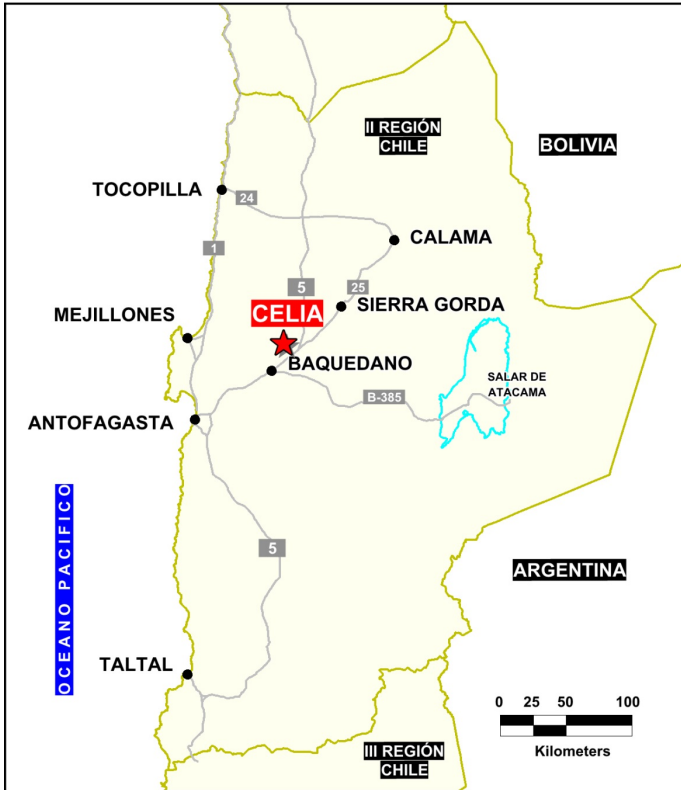


Solutions  
for human  
progress

**Celia**  
Generative Exploration  
Prospect #51

## SUMMARY

Silica-rich breccia with sulphide mineralized (bornite, chalcopyrite, pyrite) clasts, cut by limonite-filled fractures and copper oxides on fracture surfaces.



## HIGHLIGHTS

Central Northing (UTM):	7437600
Central Easting (UTM):	469600
Elevation (masl):	1940
Metal(s):	Cu
Deposit Style:	porphyry
Exploration Stage	Generative Exploration
Area (hectares)	13724
Nearest Project:	-
Historical:	61 salt crust drillholes

## EXPLORATION WORK

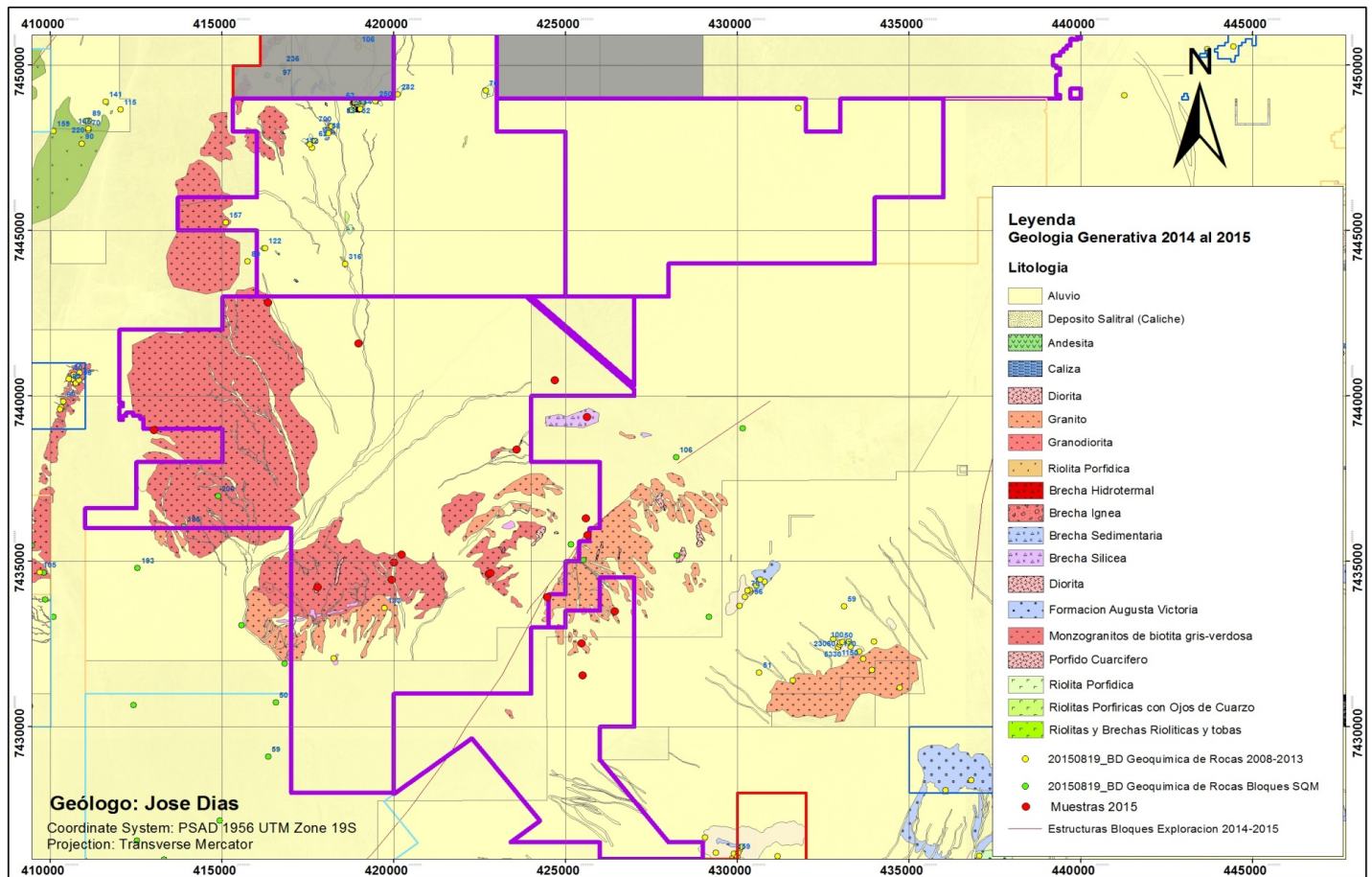
Geological Mapping:	1:25000
Geochemical Samples:	19
Trenching	N/A
Channel Samples	N/A
Geophysics:	N/A
RC Drill holes	12 (1980 m)
DDH Drill holes:	N/A
Total drilling :	12 (1980 m)
Other:	N/A





Solutions  
for human  
progress

**Celia**  
Generative Exploration  
Prospect #51



**CONTACT  
DETAILS**

**Jose Dias Cifuentes**  
New Metal Business Director  
jose.dias.cifuentes@sqm.com  
+56 9 7465 7359

**Ricardo Gonzalez Montecinos**  
Metal Business and Exploration Manager  
ricardo.gonzalez.montecinos@sqm.com  
+56 9 6320 7257

[www.sqm.com](http://www.sqm.com)

